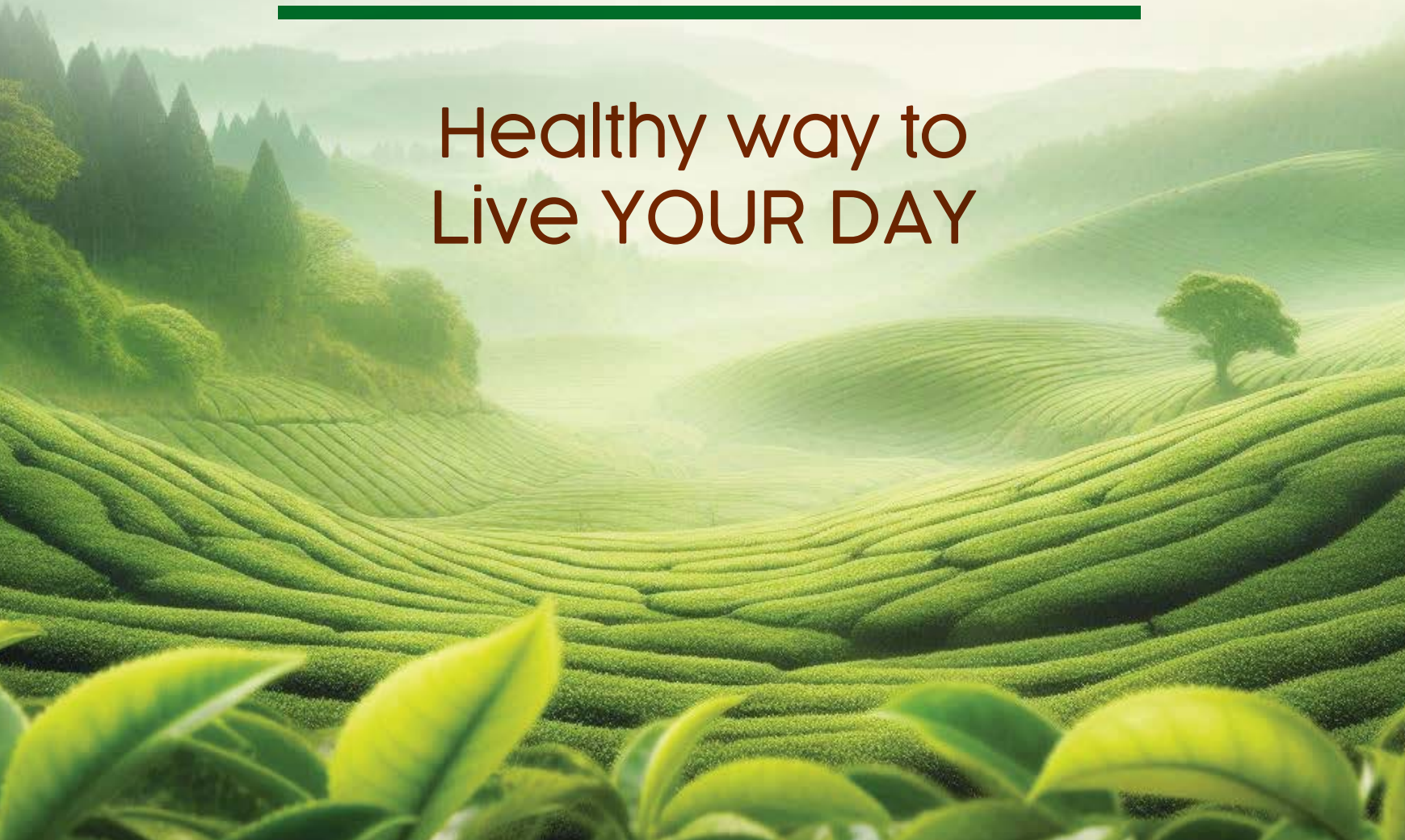


# نباتكو Nabato®

---

Healthy way to  
Live YOUR DAY



## Introduction :

Dealing with herbs has begun since the dawn of history in various parts of the world and it was associated with the prevailing civilizations at that time. Scientific progress in a certain period led to the discovery of chemicals and turning to it in food and medicine. This has become prevalent for a long time, but with the progress of research that has shown many of the harmful health effects that beverages and industrial foods have it was necessary to return to nature; which has proven to be safe for health and doesn't leave any harmful or negative effects. Therefore, studies and research progressed in this field, and constitutions and standards certified by international research centers, which led to the spread of pharmaceutical and plant-based food industries and the intensification of scientific and technical research to meet humanity's needs to obtain safe food and medicine. This is what prompted developed countries to document and support research on this type of food and medicine and to generalize regulations and work systems, and examinations that guarantee the credibility and safety of product trading at all levels and fields. The WHO expects this industry to be the most widespread, accounting for %80 in the upcoming years compared to industrial and chemical sources of food and medicine, and has begun to clarify its harms and short and long term effects.

Hence, **Nabatco** decided, based on its accumulated experiences and because of its absolute belief in Mother Nature, to enter the world of plant industries relying on the latest international technologies and scientific studies fully aware that this industry is sensitive and precise and requires high experience in dealing with natural products, is in constant need of continuous scientific communication and cooperation with research centers to find out what is new and adopting special studies on constitutional plants in circulation, taking into account storage

and preparation conditions and monitoring the change in active ingredients and ensuring that they are free from traces of fertilizers, pesticides, insects, and microorganisms, as well as applying product preservation techniques during and after manufacturing through **Nabatco's** full knowledge of all good manufacturing conditions through advanced work controls portals (ISO, HASSP, GMP) and their related quality standards that guarantee the credibility, safety and security of the product from the raw material to consumption going through all stages, in addition to taking into account environmental conditions and occupational safety





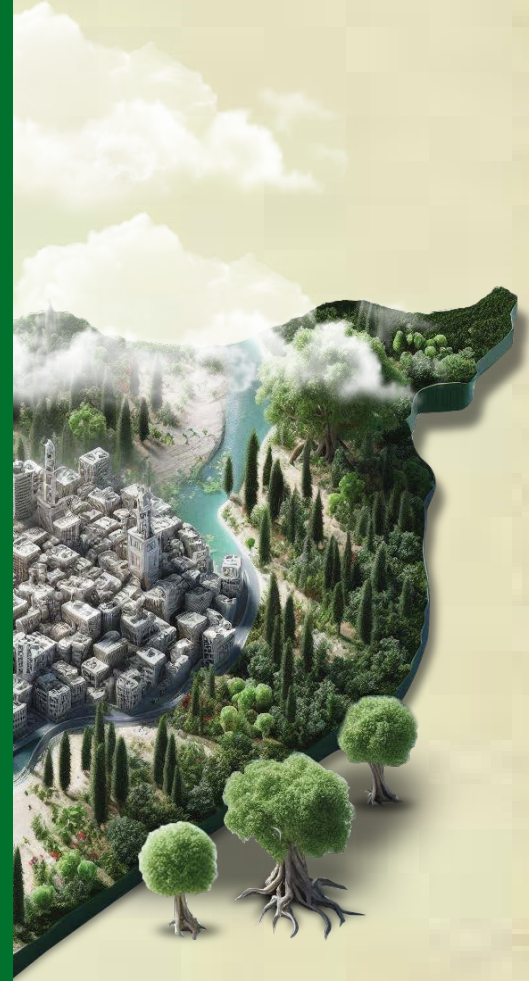
## Our Origination:

**Nabatco's** origins go back to the founding of **Medico**, the first pharmaceutical Laboratories in Syria, in 1958. In 1991, a new modern pharmaceutical company, **Ibn Hayyan**, was established by the second generation of the partnership.

The partners remained committed to discovering and developing new and better ways to improve health and treat disease. Hence, **Nabatco**, a natural products company, was founded by the third generation, in 2013.

## Where to Find Us:

**Nabatco Company** was established in Syria, which is rich in green nature where the mountains descend to meet the sea and in the middle is the beautiful city of Homs which is lined on both sides with small rivers, creating an ideal environment for the growth of herbs and medicinal plants.



▶ **Today, Nabatco** exports various types of tea and herbs to 15 countries around the world.

### **Quality:**

**Nabatco's** quality control team constantly strives to ensure the perfect product for its customers. The quality team is selected from the best expertise and trained and its constantly increasing its experience. This ensures that the safety standards of **Nabatco** products are among the highest in the food industry.

### **Environmental Sustainability:**

**Nabatco** is a leading company in the field of occupational health and safety, food hygiene, and environmental sustainability as it constantly follows best practices within its work units and strives hard to enable the same strong commitment among its suppliers on a permanent basis by following the optimal methods and programs that enable it to constantly provide the best quality products with an outstanding safety record and minimal impact on the environment, its corporate responsibility focuses on creating a sustainable future for the upcoming generations.





نباتکو

**Nabatco®**



## Nabatco® ناباتكو Chamomile

- Ingredients: chamomile flowers.
- Packing: each box contains 20 teabags  
Every 20 boxes within a nylon package  
Every 5 packages in a 100-pack carton



## Nabatco® ناباتكو Anise

- Ingredients: anise seeds.
- Packing: each box contains 20 teabags  
Every 20 boxes within a nylon package  
Every 5 packages in a 100-pack carton



## Nabatco® ناباتكو Spearmint

- Ingredients: spearmint leaves  
natural mint flavor .
- Packing: each box contains 20 teabags  
Every 20 boxes within a nylon package  
Every 5 packages in a 100-pack carton



## Nabatco® ناباتكو Thyme

- Ingredients: thyme leaves.
- Packing: each box contains 20 teabags  
Every 20 boxes within a nylon package  
Every 5 packages in a 100-pack carton



Dual-chamber sachets to ensure better dissolution



## Nabatco® نباتكو

### Lemon Verbena

- Ingredients: lemon verbena leaves.
- Packing: each box contains 20 teabags  
Every 20 boxes within a nylon package  
Every 5 packages in a 100-pack carton



## Nabatco® نباتكو

### Hibiscus

- Ingredients: hibiscus flowers.
- Packing: each box contains 20 teabags  
Every 20 boxes within a nylon package  
Every 5 packages in a 100-pack carton



## Nabatco® نباتكو

### Ginger

- Ingredients: ginger root.
- Packing: each box contains 20 teabags  
Every 20 boxes within a nylon package  
Every 5 packages in a 100-pack carton



## Nabatco® نباتكو

### Sage

- Ingredients: sage leaves .
- Packing: each box contains 20 teabags  
Every 20 boxes within a nylon package  
Every 5 packages in a 100-pack carton



Dual-chamber sachets to ensure better dissolution



80°  
Add boiling Water for one Sachet



Wait 2 - 5 min  
ENJOY



## Nabatco® نباتكو

### Zhourat Shamia

**Ingredients:** chamomile flowers  
marshmallow plant-lemon verbena leaves  
lavender flowers-natural lemon flavor.

**Packing:** each box contains 20 teabags  
Every 20 boxes within a nylon package  
Every 5 packages in a 100-pack carton



## Nabatco® نباتكو

### Wild Zhourat

**Ingredients:** lavender flowers-rosemary  
leaves-thyme leaves-hyssop leaves  
cinnamon-sage leaves.

**Packing:** each box contains 20 teabags  
Every 20 boxes within a nylon package  
Every 5 packages in a 100-pack carton



## Nabatco® نباتكو

### Liquorice & Mint

**Ingredients:** mint leaves-liquorice roots  
natural mint flavor.

**Packing:** each box contains 20 teabags  
Every 20 boxes within a nylon package  
Every 5 packages in a 100-pack carton



## Nabatco® نباتكو

### Winter Tea

**Ingredients:** hibiscus flowers-cinnamon  
clove flowers-peppermint leaves.

**Packing:** each box contains 20 teabags  
Every 20 boxes within a nylon package  
Every 5 packages in a 100-pack carton



Dual-chamber  
sachets to ensure  
better dissolution



## Nabatco® ناباتكو

### Cumin & Lemon

- Ingredients: cumin-lemon fruits-salt citric acid.
- Packing: each box contains 20 teabags  
Every 20 boxes within a nylon package  
Every 5 packages in a 100-pack carton



Dual-chamber sachets to ensure better dissolution



## Nabatco® ناباتكو

### Cumin & Lemon MEGA

MEGA size  
GREAT taste



- Ingredients: cumin-lemon fruits-salt citric acid.
- Packing: each box contains 20 teabags  
Every 15 boxes within a nylon package  
Every 4 packages in a 60-pack carton

## Nabatco® ناباتكو

### AlZallouh with Honey & lemon

- Ingredients: zallouh root-cinnamon ginger root-hawthorn leaves-lemon fruit natural honey flavor-natural lemon flavor.
- Packing: each box contains 20 teabags  
Every 15 boxes within a nylon package  
Every 4 packages in a 60-pack carton



## Nabatco® ناباتكو

### بولوو Poloo

- Ingredients: mint-natural lemon-lemon verbena-citric acid-lemon flavor-menthol vitamin C.
- Packing: each box contains 20 teabags  
Every 15 boxes within a nylon package  
Every 4 packages in a 60-pack carton



## Nabatco® نباتکو

### Chamomile & honey

- Ingredients: chamomile flowers  
natural honey flavor.
- Packing: each box contains 20 teabags  
Every 20 boxes within a nylon package  
Every 5 packages in a 100-pack carton



## Nabatco® نباتکو

### Ginger lemon and honey

- Ingredients: Ginger roots - Lime fruit  
natural lemon flavour - natural honey flavour  
citric acide.
- Packing: each box contains 20 teabags  
Every 20 boxes within a nylon package  
Every 5 packages in a 100-pack carton



## Nabatco® نباتکو

### Ginger and honey

- Ingredients: ginger roots - natural honey flavor.
- Packing: each box contains 20 teabags  
Every 20 boxes within a nylon package  
Every 5 packages in a 100-pack carton



Dual-chamber  
sachets to ensure  
better dissolution



Add boiling Water  
for one Sachet



ENJOY



Dual-chamber sachets to ensure better dissolution




## Nabatco® نباتكو

### Mint Green tea

WITH Mint

- Ingredients: green tea leaves-mint leaves natural mint flavor.
- Packing: each box contains 20 teabags  
Every 20 boxes within a nylon package  
Every 5 packages in a 100-pack carton



## Nabatco® نباتكو

### 煎茶 SENCHA سینشا Green tea

- Ingredients: green tea leaves.
- Packing: each box contains 20 teabags  
Every 20 boxes within a nylon package  
Every 5 packages in a 100-pack carton



## Nabatco® نباتكو

### LEMON Green tea

- Ingredients: green tea leaves natural lemon flavor.
- Packing: each box contains 20 teabags  
Every 20 boxes within a nylon package  
Every 5 packages in a 100-pack carton



## Nabatco® نباتكو

### Apple Green tea

Apple انتفاخ

- Ingredients: green tea leaves natural apple flavor.
- Packing: each box contains 20 teabags  
Every 20 boxes within a nylon package  
Every 5 packages in a 100-pack carton



THROAT  
Soothing

**Nabatco®**  
نباتكو

Cough Soothing  
Mixture

Ingredients: thyme leaves-liquorice root  
chamomile flowers-ginger roots-ivy leaves .

Packing: each box contains 20 teabags  
Every 20 boxes within a nylon package  
Every 5 packages in a 100-pack carton



NATURAL  
LAXATIVE



**Nabatco®**  
نباتكو  
laxative  
mixture

Ingredients: senna leaves-anise fruits  
fennel fruits-coriander leaves-liquorice root.

Packing: each box contains 20 teabags  
Every 20 boxes within a nylon package  
Every 5 packages in a 100-pack carton



**Nabatco®**  
نباتكو

COLD & FLU  
mixture



Ingredients: ginger roots-ivy leaves  
lemon fruits-cinnamon bark-peppermint leaves.

Packing: each box contains 20 teabags  
Every 20 boxes within a nylon package  
Every 5 packages in a 100-pack carton



Dual-chamber  
sachets to ensure  
better dissolution



Add boiling Water  
for one Sachet



Wait 2 - 5 min

ENJOY

نباتكو

**Nabatco®**

**MontBerry<sup>®</sup>**

# Mont Berry®



Squeeze bottle  
to Easy  
Usage

**NATURAL HONEY**

Made from  
**nature**



Ingredients: Pure Syrian flower honey



with  
Desserts



To sweeten  
hot and cold  
drinks



Usage  
as food

MontBerry®

مونتبيري

Vital Honey Blend

Ingredients: Natural Bee Honey - Natural Fresh Royal Jelly - Ginkgo Leaves Powder - Cinnamon Bark Powder - Galangal Root Powder - Ginseng Root Powder - Alzallouh Root Powder - Ginger Root Powder.



MontBerry®

مونتبيري

Vital Honey Blend

Ingredients: Natural Bee Honey - Natural Fresh Royal Jelly - Cinnamon Bark Powder - Galangal Root Powder - Ginger Root Powder.



MontBerry®

مونتبيري

Royal Honey Blend

Ingredients: Natural Bee Honey - Natural Fresh Royal Jelly - Ginseng Root Powder - Alzallouh Root Powder - Ginger Root Powder.



MontBerry





Ingredients: Ingredients: Natural Bee Honey - Natural Apple Flavor.

Kids Apple Flavored Honey Syrup



Ingredients: Natural Bee Honey - Natural Banana Flavor.

Kids Banana Flavored Honey Syrup



Ingredients: Natural Bee Honey Natural Strawberry Flavor.

Kids Strawberry Flavored Honey Syrup



# Mont Berry®



ماكس  
**MAXXX HONEY**  
with natural additives

Ingredients: Honey, Zallouh, cinnamon, ginger, blueberry flavour.



Ingredients: glucose syrup-sugar-natural honey-ginseng root-ginger root-citric acid-natural honey flavor-cornstarch.

**GINSENG AND GINGER AND HONEY**



Ingredients: glucose syrup-sugar-natural honey-propolis-citric acid-natural honey flavor-cornstarch.

**PROPOLIS AND HONEY**



Ingredients: glucose syrup-sugar-natural honey-ginger root-citric acid-natural honey flavor-lemon flavor-vitamin C-food coloring-cornstarch .

**GINGER AND LEMON AND HONEY**



Ingredients: glucose syrup-sugar-natural honey-ginseng-citric acid-natural honey flavor-cornstarch .

**GINSENG AND HONEY**





Ingredients: glucose syrup-sugar-citric acid-menthol-eucalyptus-peppermint flavor-vitamin C-food coloring.



Ingredients: glucose syrup-sugar-citric acid-menthol-eucalyptus-lemon flavor-mint flavor-vitamin C-food coloring.



Ingredients: glucose syrup-sugar-citric acid-menthol-eucalyptus-mint flavor-vitamin C.



Ingredients: glucose syrup-sugar-citric acid-menthol-eucalyptus-lemon flavor-vitamin C-food coloring .



Ingredients: glucose syrup-sugar-citric acid-menthol-eucalyptus-cherry flavor-vitamin C-food coloring.



Refreshing and soothing to the throat

LOZENGES PRODUCTS

MontBerry

نباتكو  
Nabatco



Ingredients: glucose syrup-sugar-citric acid-menthol-eucalyptus-peppermint flavor-vitamin C-food coloring.

Extra  
Menthol



Mint with  
lemon

Ingredients: glucose syrup-sugar-citric acid-menthol-eucalyptus-lemon flavor-mint flavor-vitamin C-food coloring.



Ingredients: glucose syrup-sugar-citric acid-menthol-eucalyptus-mint flavor -vitamin C.

Spearmint



Ingredients: glucose syrup-sugar-citric acid-menthol-eucalyptus-lemon flavor-vitamin C-food coloring .

lemon



Ingredients: glucose syrup-sugar-citric acid-menthol-eucalyptus-cherry flavor-vitamin C-food coloring .

Cherry



Refreshing and soothing to the throat



# MontBerry

مونتبيري

## Pyramid

tea bags



Natural lemon fruit  
GreenTea



GreenTea  
with Mint



CHINESE  
Green Tea



Pomegranate & Forest fruit  
WHITE TEA



Whole  
Chamomile



# MontBerry مونتبيري

Pyramid  
tea bags



Natural lemon fruit  
Green Tea



Green Tea  
with Mint



CHINESE  
Green Tea



Whole  
Chamomile



Pomegranate & Forest fruit  
WHITE TEA



# Upcoming products

## **Black Tea Products:**

- Black Tea
- Earl Grey Black Tea
- Rose Black Tea
- Peach Black Tea

## **Functional and Healthy Products**

- Throat Comfort
- Bed Time
- After Sport
- Manhood
- Detox
- Wakeup



# Nabatco® Products



## HOT DRINKS

Product	Carton\Pack	Sachet\Pack	Net G\Sachet	Net G\Pack	Gross G\Pack	Gross KG\Carton	Outer carton dimensions: Length X Width X Height cm
Double Cumin and Lemon	100	20	4	80	120	12.6	42 X 39.5 X 87
Mega Cumin and Lemon	60	20	7	140	180	11.4	42 X 39.5 X 87
Zhourat Shamia	100	20	1.7	34	74	8	42 X 39.5 X 87
Wild Zhourat	100	20	1.7	34	74	8	42 X 39.5 X 87
Winter Tea	100	20	1.8	36	76	8.2	42 X 39.5 X 87
Liquorice and Mint	100	20	1.8	36	76	8.2	42 X 39.5 X 87
Zallouh with Honey and Lemon	100	20	1.8	36	76	8.2	42 X 39.5 X 87
Polo (Lemon and Mint)	100	20	1.7	34	74	8	42 X 39.5 X 87
Hibiscus with Rose	100	20	2	40	80	8.6	42 X 39.5 X 87
HibiscuswithPineapple	100	20	2	40	80	8.6	42 X 39.5 X 87
Ginger and Honey	100	20	2	40	80	8.6	42 X 39.5 X 87
Ginger with Honey and Lemon	100	20	2	40	80	8.6	42 X 39.5 X 87
Chamomile with Honey	100	20	1	20	60	6.6	42 X 39.5 X 87

## SINGLE HERBS

Chamomile	100	20	1	20	60	6.6	42 X 39.5 X 87
Anise	100	20	2	40	80	8.6	42 X 39.5 X 87
Lemon Verbena	100	20	1.7	34	74	8	42 X 39.5 X 87
Thyme	100	20	1.5	30	70	7.6	42 X 39.5 X 87
Sage	100	20	1.2	24	64	7	42 X 39.5 X 87
Hibiscus	100	20	2	40	80	8.6	42 X 39.5 X 87
Mint	100	20	1.5	30	70	7.6	42 X 39.5 X 87
Ginger	100	20	2	40	80	8.6	42 X 39.5 X 87



	Product	Carton\Pack	Sachet\Pack	Net G\Sachet	Net G\Pack	Gross G\Pack	Gross KG\Carton	Outer carton dimensions: Length X Width X Height cm
<b>GREEN TEAS</b>	Chinese Green Tea	100	20	1.7	34	74	8	42 X 39.5 X 87
	Mint Green Tea	100	20	1.7	34	74	8	42 X 39.5 X 87
	Lemon Green Tea	100	20	1.7	34	74	8	42 X 39.5 X 87
	Apple Green Tea	100	20	1.7	34	74	8	42 X 39.5 X 87
<b>MEDICAL MIXTURES</b>	Laxative Mixture	100	20	1.7	34	74	8	42 X 39.5 X 87
	Cold and Influenza Mixture	100	20	1.7	34	74	8	42 X 39.5 X 87
	Cough Soothing Mixture	100	20	1.7	34	74	8	42 X 39.5 X 87

# MontBerry Products



## Pyramid Teabag Products:

	Product	Carton\Pack	Sachet\Pack	Net G\Sachet	Net G\Pack	Gross G\Pack	Gross KG\Carton	Outer carton dimensions: Length X Width X Height cm
	1. Pyramid Green Tea	48	15	2	30	59	3.23	46 X 33.5 X 34
	Pyramid Mint Green Tea	48	15	2	30	59	3.23	46 X 33.5 X 34
	Pyramid Lemon Green Tea	48	15	2	30	59	3.23	46 X 33.5 X 34
	Pyramid White Pomegranate Tea and Forest Fruit	48	15	2	30	59	3.23	46 X 33.5 X 34
	Pyramid Chamomile Tea	48	15	1	15	44	2.51	46 X 33.5 X 34
	Single Pyramid Green Tea	24	12	2	24	187	4.89	40 X 42 X 51
	Single Pyramid Mint Green Tea	24	12	2	24	187	4.89	40 X 42 X 51
	Single Pyramid Lemon Green Tea	24	12	2	24	187	4.89	40 X 42 X 51
	Single Pyramid White Pomegranate Tea and Forest Fruit	24	12	2	24	187	4.89	40 X 42 X 51
	Single Pyramid Chamomile	24	12	1	12	175	4.6	40 X 42 X 51

# Lozenges Products

## Lozenges Jars:



Honey Lozenges

Products	Pack\Bottle	Bottle\Lozeng	Net G\Bottle	Net G\Pack	Gross G\Pack	Gross KG\Carton	Outer carton dimensions: Length X Width X Height cm
Honey and propolis lozenges	12	12	36	432	790	9.48	30.5 X 18 X 41.5
Ginseng and honey lozenges	12	12	36	432	790	9.48	30.5 X 18 X 41.5
Ginseng and ginger and honey lozenges	12	12	36	432	790	9.48	30.5 X 18 X 41.5
Ginger and lemon and honey lozenges	12	12	36	432	790	9.48	30.5 X 18 X 41.5

## Mentholyptus Lozenges Cards:



Mentholyptus Lozenges

Products	Carton\Pack	Blister\Lozeng	Pack\Blister	Pack\Blister	Gross G\Pack	Gross KG\Carton	Outer carton dimensions: Length X Width X Height cm
Extra Mint Mentholiptus Lozenges	12	8	24	595	870	10.44	27 X 26 X 41
Sweet Mint Mentholiptus Lozenges	12	8	24	595	870	10.44	27 X 26 X 41
Lemon Mentholiptus Lozenges	12	8	24	595	870	10.44	27 X 26 X 41
Lemon and Mint Mentholiptus Lozenges	12	8	24	595	870	10.44	27 X 26 X 41
Cherry Mentholiptus Lozenges		8	24	595	870	10.44	27 X 26 X 41

# Honey Products



Family honey

Products	Carton\Pack	Pack\Pcs	Net G\Pack	Net G\Pack	Gross G\Pack	Gross KG\Carton	Outer carton dimensions: Length X Width X Height cm
Flowers Honey Squeeze Bottle 500g	6	4	500	2000	2225	13.35	17 X17 X 34
Flowers Honey Squeeze Bottle 250g	6	6	25	1500	1750	10.5	14 X 14 X 38
Flowers Honey Packet 50g	12	12	50	600	700	8400	19 X 26 X 30



Kids honey

Kids Apple Honey Jar	6	6	180	1080	1775	10.65	26 X 18 X 23
Kids Banana Honey Jar	6	6	180	1080	1775	10.65	26 X 18 X 23
Kids Strawberry Honey Jar	6	6	180	1080	1775	10.65	26 X 18 X 23



Tonic honey

Royal Honey Packet	12	10	60	600	875	10.5	16 X 30 X 40
Vital Honey Packet	12	10	60	600	875	10.5	16 X 30 X 40
Diamond Honey Packet	12	10	60	600	875	10.5	16 X 30 X 40



MAX honey

Max Honey for Athletes Jar	6	6	125	750	1380	8.28	17 X 15 X 20
----------------------------	---	---	-----	-----	------	------	--------------

نباتكو  
**Nabatco**<sup>®</sup>



Nabatco Customer Service مركز خدمة الزبائن  
+ 963 31 21 982 80



[www.nabatcofoods.com](http://www.nabatcofoods.com)  
[info@nabatcofoods.com](mailto:info@nabatcofoods.com)